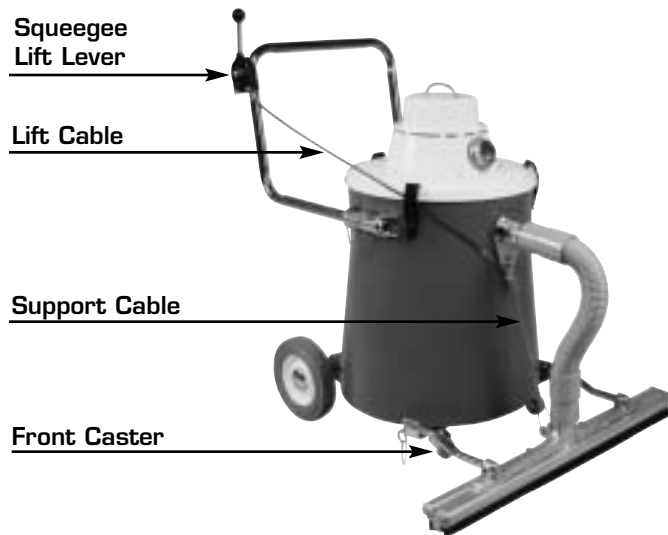




EZ SQUEEGEE ATTACHMENT INSTALLATION & REPLACEMENT PARTS LIST

This unit is intended for commercial use.



SQUEEGEE ATTACHMENT INSTALLATION

This attachment comes completely assembled except for the nozzle level control.

Place squeegee assembly on the floor and remove the speed pins from the mounting bracket.

SQ1-EZ; 2-EZ; 3-EZ;
4-EZ; 8-EZ; 9-EZ; 10-EZ

- 1)** Tilt vacuum cleaner backwards until it is resting on glidemobile handle.
- 2)** Remove the (2) front casters from the dolly sprockets.

3) Place mounting bracket with tabs facing tank and position large holes over dolly sprockets holes. Install new non-marring casters provided.

4) Tilt vacuum upright with squeegee assembly resting on floor.

5) Ensure lever handle is forward, lift squeegee and turn cable bracket with cable onto Inlet of can.

6) Rest Squeegee on floor, place lever arm on handle as shown, and tighten the bolts and nuts.

SQ5-EZ; 6-EZ

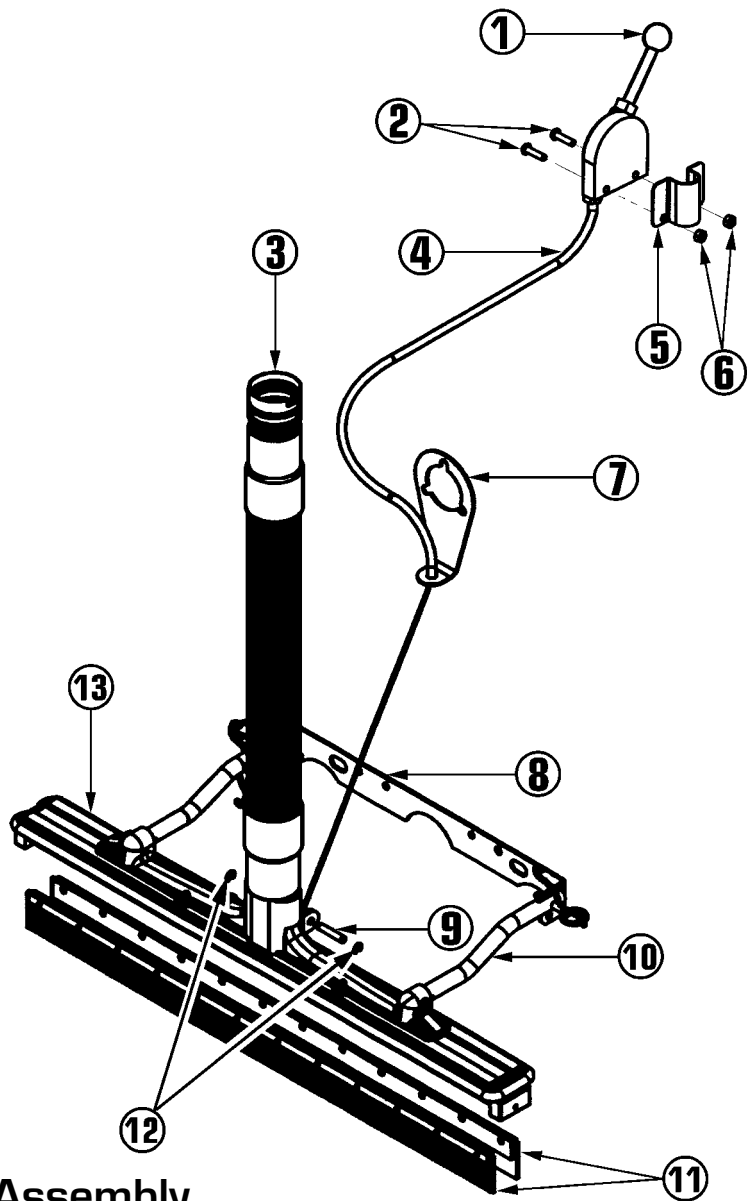
1) Remove guard and (2) screws over drain valve. Place SQ mounting bracket next to tank over drain valve with guard on the top. Replace (2) screws through guard and mounting bracket.

2) Re-install speed pin through short arm and bracket.

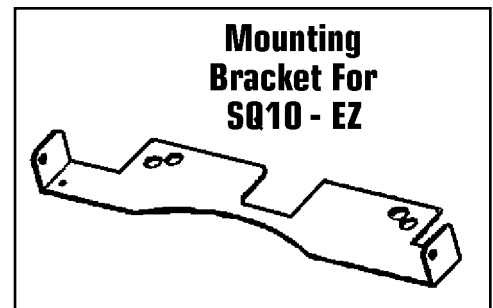
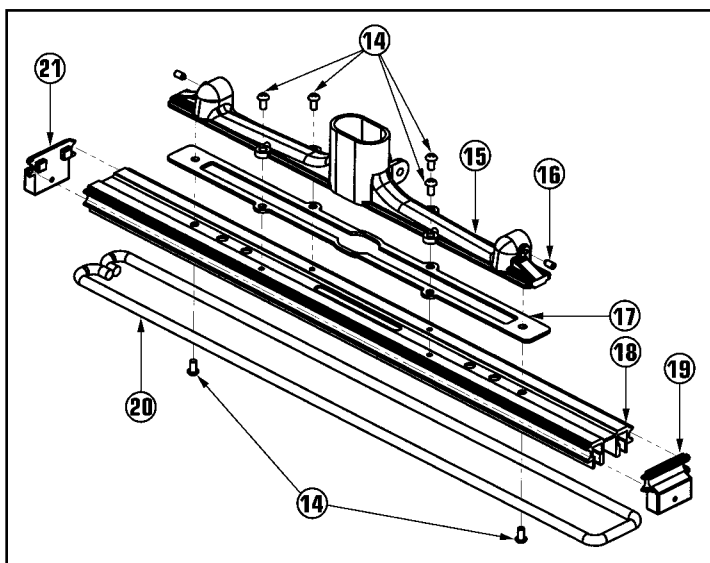
3) Turn plate 120 degrees and mount to tank intake by guiding plate notches over rivets on intake.

4) Turn plate 120 degrees back to the original position and reconnect pressure control by inserting speed pin.

SQUEEGEE
ATTACHMENT
DRAWING



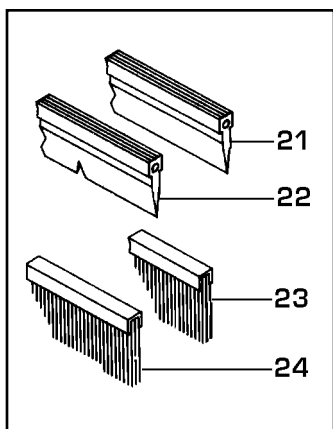
Nozzle & Shoe Assembly



SQUEEGEE ATTACHMENT REPLACEMENT PARTS LIST



Ref No	Part Description	Qty	Part No
1	Height Adjustment Lever	1	439983
2	1/4 - 20 x 1 1/2 Hex Bolt	2	233102
3	1 1/2" x 22" Vacuum Hose	1	232351
4A	SQ4-EZ Lift Cable Assembly	1	219339
4B	SQ5-EZ Lift Cable Assembly	1	227617
4C	SQ10-EZ Lift Cable Assembly	1	218901
5	Lever Clamp Bracket	1	227633
6	1/4 - 20 Nylok Nut	2	380784
7	Support Cable Bracket	1	218375
8A	SQ1 Bracket Assembly	1	333425
8B	SQ2/3/4/5/6 Bracket Assembly	1	333212
8C	SQ8/9/10 Bracket Assembly	1	351369
9	Retainer Pin	1	361909
10	Support Arm Tube	2	333220
11	Blade & Bar Assembly	2	327719
12	Retainer Ring	2	361356
13	Nozzle & Shoe Assembly	1	333077
14	1/4 - 20 x 1 1/2 Phillips Screw	6	328154
15	30" Squeegee Nozzle	1	361178
16	1/4 - 20 x 1 1/2 Screw	2	361291
17	2 1 1/4 x 1 1/2 x 1 1/8 Gasket	1	361194
18	30" Aluminum Extruded Shoe	1	361186
19	30" Squeegee Cap	1	361259
20	55" Bumper	1	394580
21	Notch Cap	1	395846
N/S	Caster Kit for non-marring	1	423378



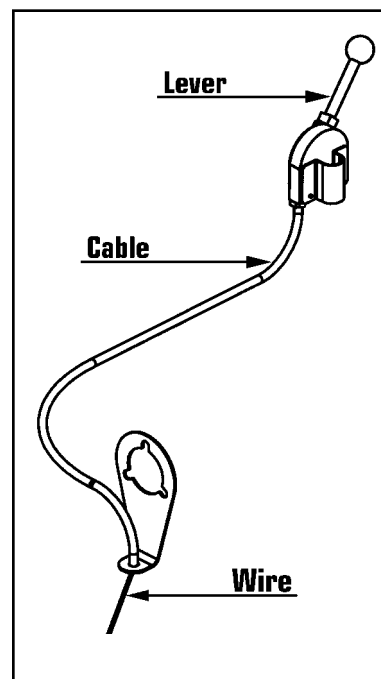
Optional Brush and Blade

Optional Brush and Blade

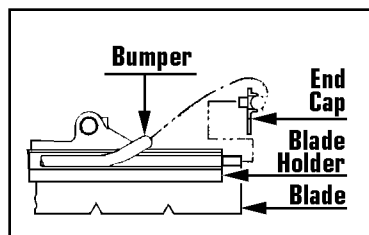
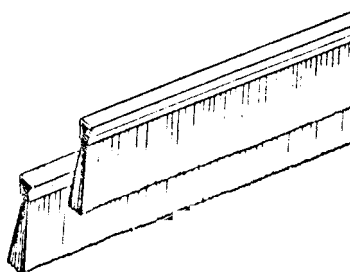
21	Rear Rubber Blade	1	361208
22	Front Notched Rubber Blade	1	361216
23	Rear Brush	1	361232
24	Front Brush - Notched	1	361224

REPLACING LEVER CONTROL LEVEL WIRE

- 1) Pull the lever back to lift the squeegee up and push it forward to lower the squeegee.
- 2) On the side of the lever handle are two set screws used to adjust the level of the squeegee on or off the floor.
- 3) Once the screws are loose, push the cable wire up into the lever housing and tighten the set screws when you have adjusted your lift or up or down.



OPTIONAL FLOOR BRUSH INSTALLATION



- 1) To replace squeegee blades with floor brushes, tilt vacuum back until it is resting on the glidemobile
- 2) Carefully remove bumper starting at the closed end of the blade holder and remove end cap.

CAUTION:

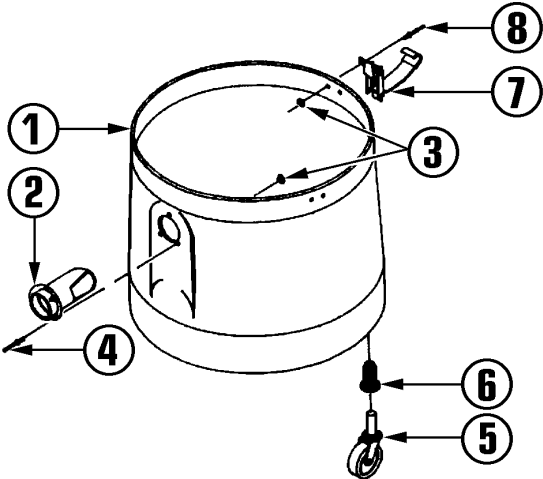
The bumper is under tension, take **care** when working with the bumper.

- 3) Grasp blade firmly and slide out of holder.
- 4) Check the holder channels to insure there is no dirt build-up or obstructions in channels to prevent inserting of brush attachments.
- 5) Insert notched brush strip in front channel and solid brush strip in rear channel.
- 6) Replace end cap and pull bumper back into place.

8, 15, & 20 GALLON POLY TANK REPLACEMENT PARTS LIST

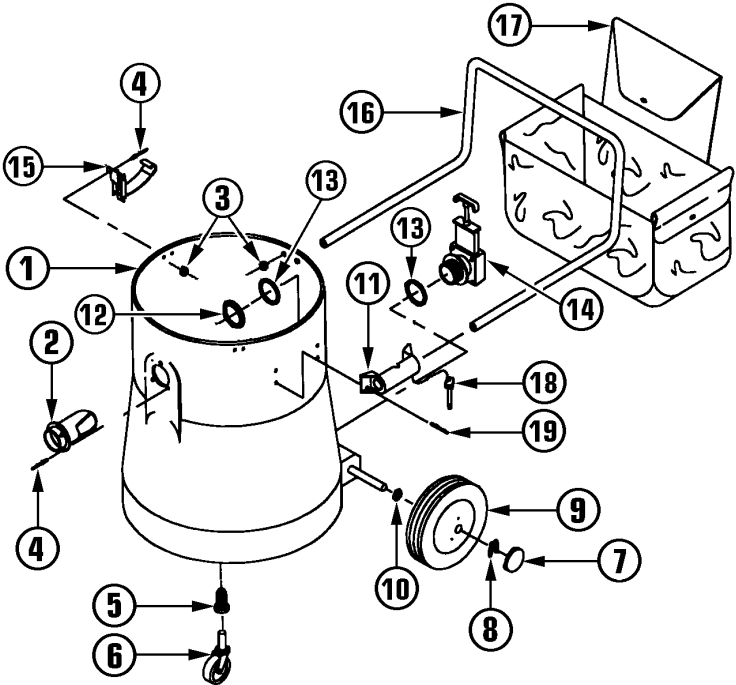
8 GALLON RECOVERY TANK

Ref No	Part Description	Qty	Part No
1	Poly Tank w/o Casters	1	372560
2	Inlet Fitting	1	325406
3	Steel Washer	9	303909
4	Pop Rivet	3	415472
5	2 1/2" Ball Bearing Casters	4	307408
6	Plastic Caster Socket	4	371750
7	Hold Down Clamp	3	358312
8	Pop Rivet	6	374733



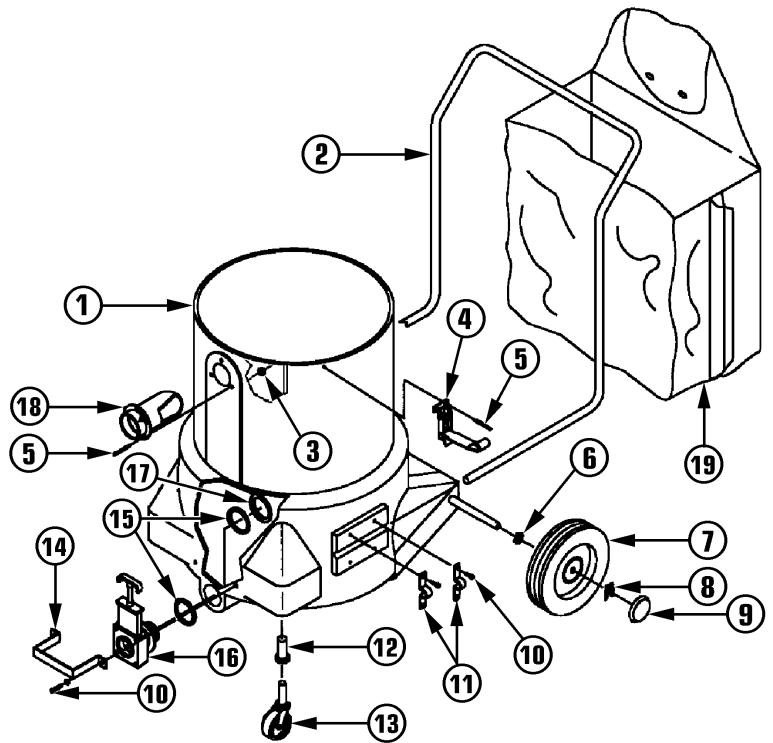
15 GALLON RECOVERY TANK

Ref No	Part Description	Qty	Part No
1	Poly Tank Assembly	1	375640
2	Inlet Fitting	1	325406
3	Steel Washer	3	303909
4	Pop Rivet	3	415472
5	Plastic Caster Sockets	2	371750
6	2 1/2" Ball Bearing Casters	2	307408
7	Hub Cap	2	319317
8	"X" Washer	2	368997
9	8" Wheel w/Hub	2	330396
10	Spring Washer	2	374059
11	Handle Bracket	2	376949
12	Large Nut	1	306789
13	Gate Valve Gasket	2	307602
14	Gate Valve	1	319260
15	Hold Down Clamps	3	358312
16	Chrome Push Handle	1	376906
17	Tool Caddy	1	319198
18	Speed Pin & Ring Assy	2	385182
19	Pop Rivet	14	374733

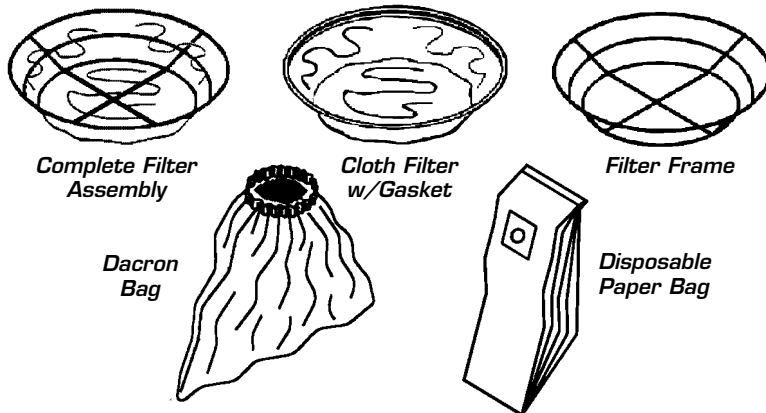


20 GALLON RECOVERY TANK

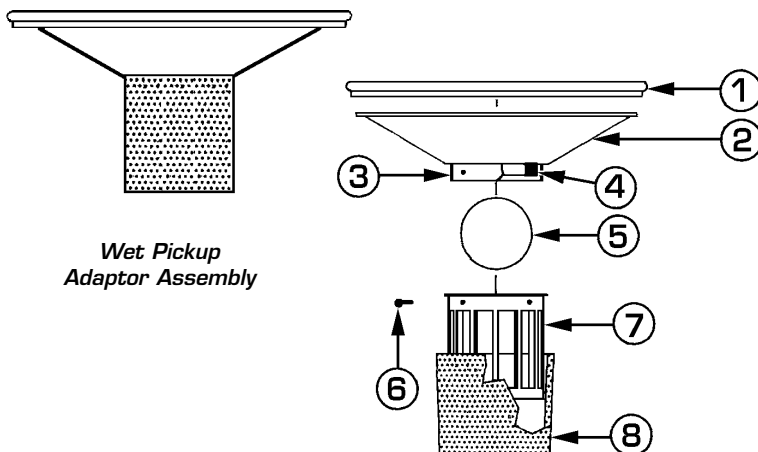
Ref No	Part Description	Qty	Part No
1	Poly Tank Assembly	1	326305
2	Chrome Push Handle	1	315524
3	Steel Washer	3	303909
4	Hold Down Clamps	3	358312
5	Pop Rivet	9	374733
6	Spring Washer	2	374059
7	8" Wheels	2	369004
8	"X" Washer	2	368997
9	Hub Cap	2	319317
10	1/4-20 X 1 1/2" Rd Screws	10	360848
11	Handle Brackets	4	328111
12	Plastic Caster Sockets	2	371750
13	3" Swivel Casters	2	314056
14	Guard for Gate Valve	1	314064
15	Gate Valve Gasket	2	307602
16	Gate Valve w/Hose Connector	1	318442
17	Large Nut	1	306789
18	Inlet Fitting	1	325406
19	Tool Caddy (Optional)	1	354201



DRY FILTERS AND DISPOSABLE BAGS



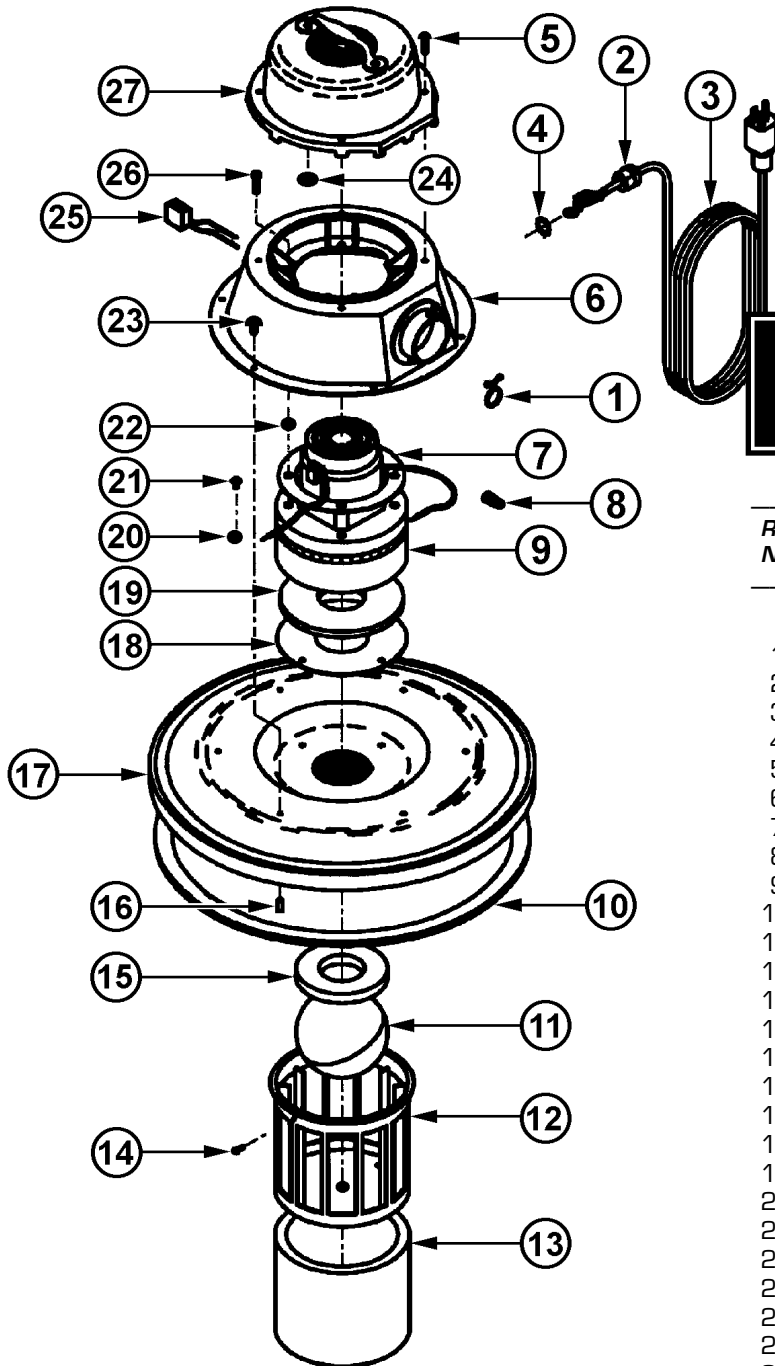
Part Description	Part No
Complete Dry Filter Assembly	378461
Filter Frame Assembly	371696
Cloth Filter w/Gasket	371580
Dacron Clog-Proof Bag	300888
Disposable Paper Bags-5/Pk (8 Gal)	330353
Disposable Paper Bags-5/Pk (15 & 20 Gal)	384496



WET PICKUP ADAPTOR REPLACEMENT PARTS LIST

Ref No	Part Description	Qty	Part No
	Wet Pickup Adapter Assy	1	377295
1	Sealing Gasket	1	376027
2	Wet Pan w/Filter Support and Gaskets	1	371742
3	Filter Support Cup	1	377791
4	Ball Neoprene Gasket	1	338567
5	Float Ball	1	338133
6	Screw	2	309710
7	Plastic Float Cage	1	377775
8	Foam Charcoal Sleeve	1	365300

#21 MOTOR HEAD REPLACEMENTS PARTS LIST



1¹/₈ HP BY-PASS
MOTOR HEAD (16")

Ref No	Part Description	Qty	Part No
	Motor Head Assembly	1	345040
1	Purse Lock	1	365491
2	Strain Relief	1	381063
3	30 Ft, 18/3 Line Cord	1	318647
4	Steel Washer	1	398187
5	#8 X 1" Screw	4	394270
6	Dome Assembly	1	394610
7	Circle Gasket	1	378607
8	Orange Wire Connector	3	398985
9	1 ¹ / ₈ HP, 115 Volt Motor	1	337757
10	Flat Gasket	1	320048
11	Float Ball	1	338133
12	Float Cage	1	377775A
13	Foam Sleeve	1	365300
14	#6 X 1 ¹ / ₂ " Screw	2	331694
15	Circle Gaskets	1	338567
16	Screw Protector	6	341649
17	16" Cover	1	317896
18	Circle Gasket	1	394319
19	Circle Gasket	1	394300
20	#12 Int Tooth Lockwasher	1	364037
21	#10-32 X .31 Screw	1	393258
22	Flat Nylon Washer	4	361054
23	#12-14 X 1 ¹ / ₂ " Screw	6	314595
24	Steel Washer	2	369519
25	Rocket Switch Assembly	1	393754
26	#10 X .87 Hex Screw	4	368385
27	Dome Upper Assembly	1	394602