

REPLACEMENT PARTS LIST

QUARRYMASTER™ FLOOR MACHINE



Mastercraft.

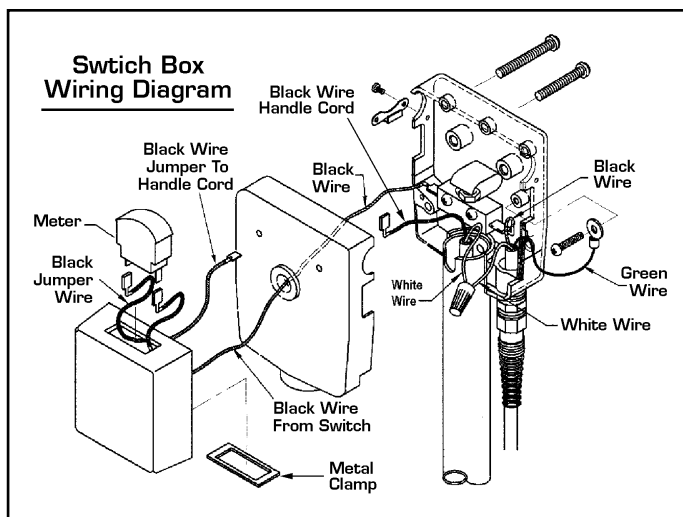
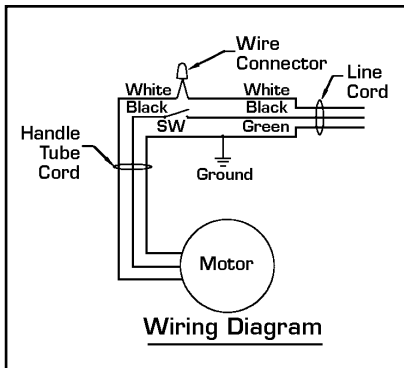
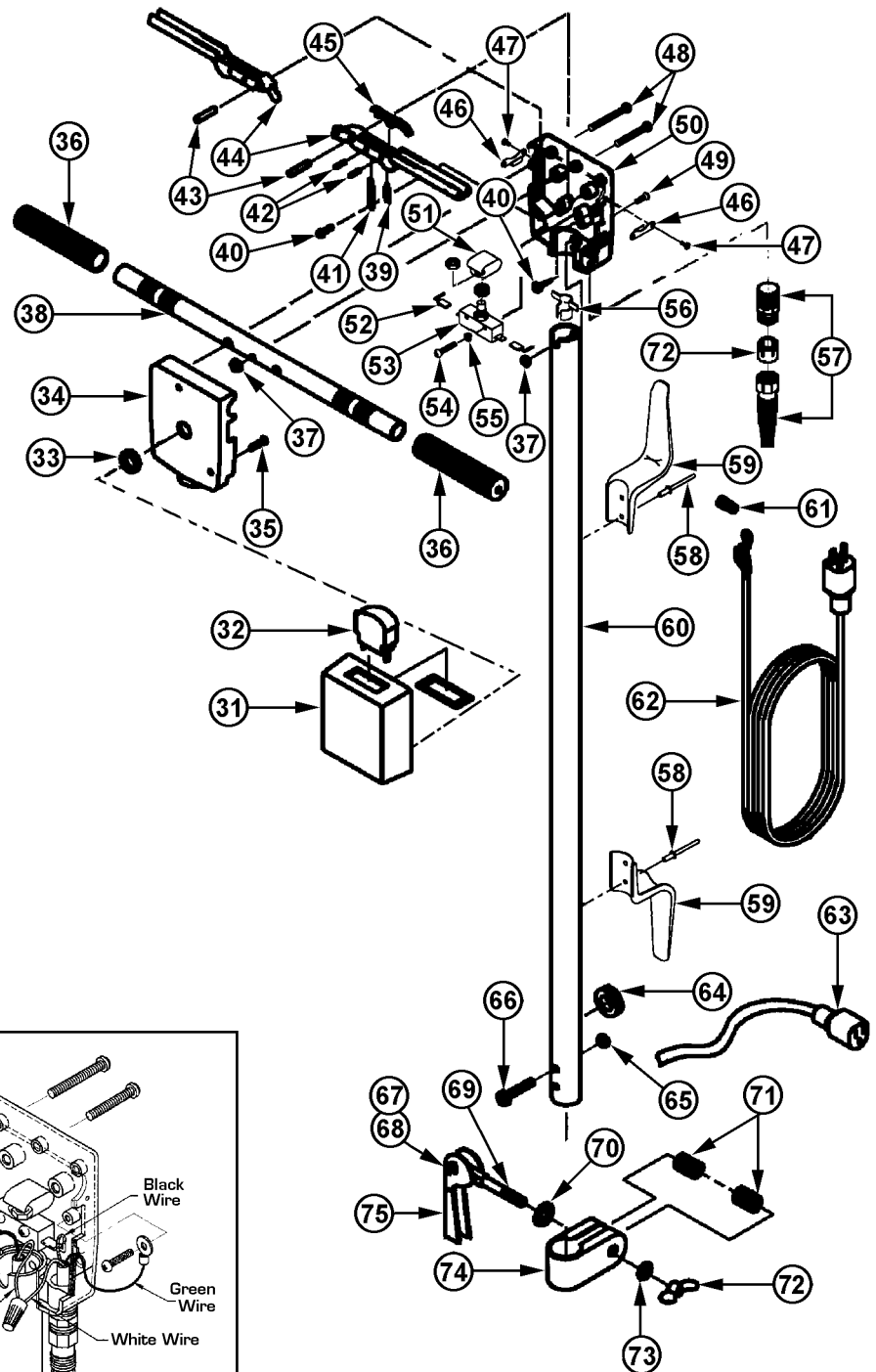
777 South Street P.O. Box 2310
Newburgh, NY 12550-0606

TEL:(800) 835-7812 (845) 565-8850

FAX:(800) 752-6883 (845) 565-9392

mastercraftusa.com
techsupport@mastercraftusa.com

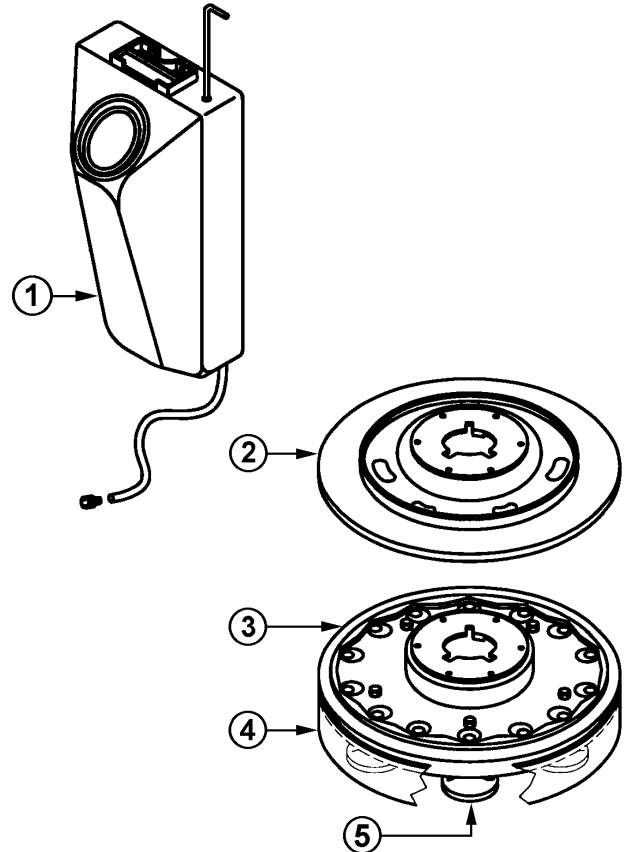
HANDLE ASSEMBLY REPLACEMENT PARTS DRAWING



HANDLE ASSEMBLY AND ATTACHMENTS REPLACEMENT PARTS LIST

Ref No	Part Description	Qty	Part No
	Handle Assembly	1	324957
31	Control Box	1	330000
32	AMP Meter W/Mtg Plate	1	330019
33	Snap-In Grommet	1	371998
34	Switch Box Cover	1	384771
35	#8-32 X 1/2" Swage Screw	3	385387
36	Ribbed Handle Grip	2	324744
37	#12-24 Hex Nut w/Washer	3	376744
38	Handle Bar	1	376612
39	Trigger Lock Spring	2	383147
40	#8-32 X 1/4" Screw	2	367389
41	Trigger Spring	2	376671
42	Roll Pin	4	383139
43	Trigger Pin	2	376701
44A	Plastic Trigger	2	385654
44B	Plastic Trigger Kit	1	386839
45	Trigger Lock	2	390119
46	Reinforced Plate	2	387169
47	#6-32 X 1/4" Screw	4	349402
48	#12-24 X 17/16" Screw	4	376760
49	#12-24 X 1/2" Clamp Bolt	2	312746
50	Switch Box	1	458953
51	Leaf Spring	1	335584
52	Flag Terminal	2	379166
53	Switch	1	469629
54	#6-32 X 1" Screw	2	335576
55	#6 Int Lock Washer	2	355224
56	Cord Clamp	1	342890
57	Complete Strain Relief	1	352705
58	Pop Rivet	4	318892
59	Cord Hook	2	352845
60	Handle Tube	1	376779
61	Orange Wire Nut	1	398985
62A	115V, 50 Ft., 14/3 Power Cord	1	376809
62B	230V, 49 Ft., 16/3 Power Cord	1	410446
63	14-3 Handle Power Cable	1	435279
64	Rubber Grommet	1	435252
65	5/16-18 Hex Nut	2	354791
66	5/16-18 X 1 1/2" Bolt	2	353272
67	Lever Pin	1	382434
68	Metal Cap	1	380555
69	3/8-16 X 3 3/8" Square Bolt	1	380504
70	Square Hole Flat Washer	1	382426
71	Spring	2	367184
72	Strain Relief Bushing	1	390348
73	Wing Nut	1	380490
74	3/8" Flat Steel Washer	1	353221
75	"U" Clamp	1	376051
76	Clamping Lever	1	380520

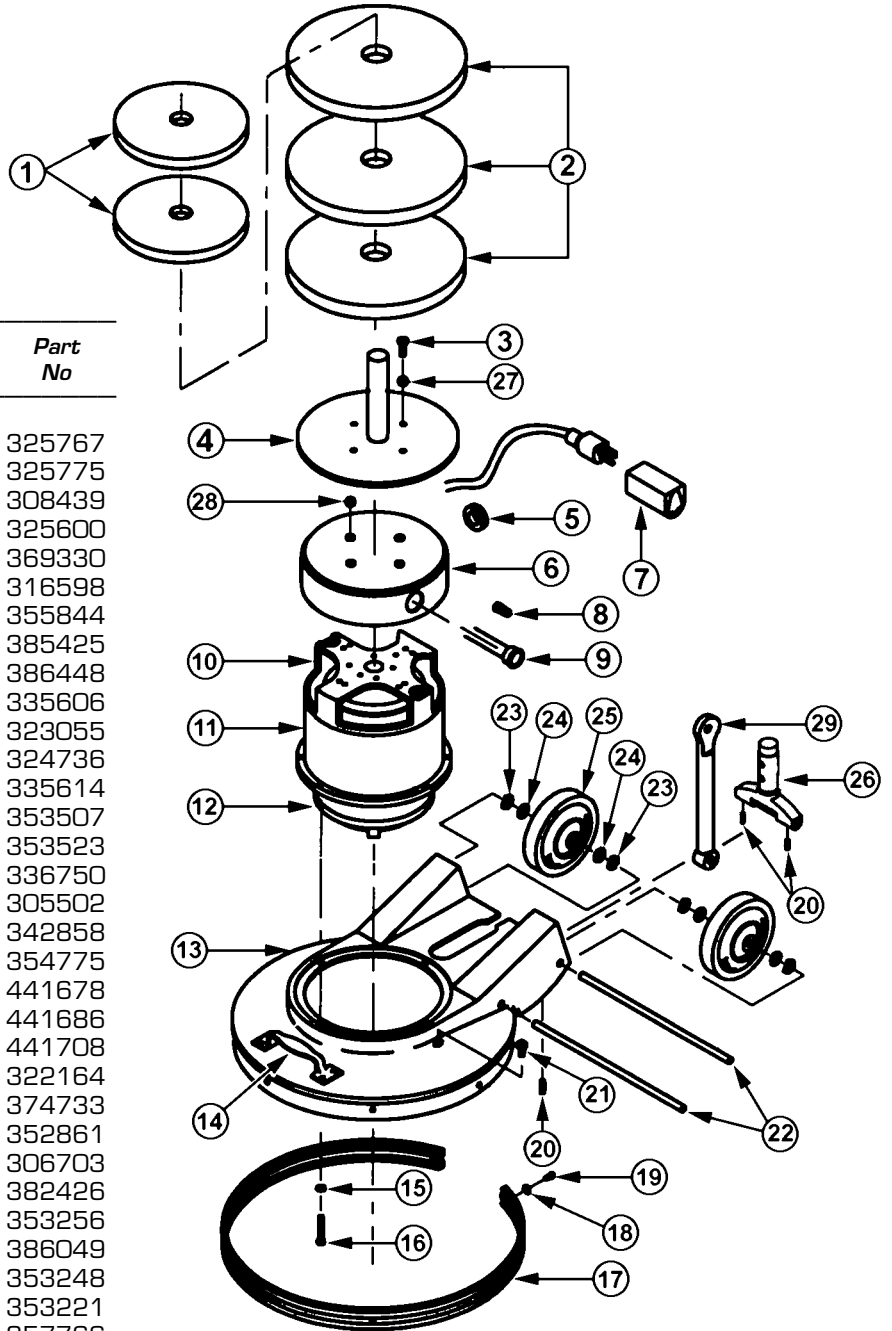
*On 24" machine only (1) required.



ATTACHMENTS

Ref No	Part Description	Qty	Part No
1	4 Gallon Solution Tank	1	334898
2A	17" Showerfeed Pad Driver	1	325783
2B	20" Showerfeed Pad Driver	1	330337
2C	24" Showerfeed Pad Driver	1	330345
3A	17" Diamond Disc Pad Driver w/Vinyl Splash Guard	1	329126
3B	20" Diamond Disc Pad Driver w/Vinyl Splash Guard	1	411116
3C	24" Diamond Disc Pad Driver w/Vinyl Splash Guard	1	339687
4	17" Vinyl Splash Guard	1	329916
4B	20" Vinyl Splash Guard	1	411183
4C	24" Vinyl Splash Guard	1	415553
5A	Pad Disc	1	338591
5B	Pad Disc (Set of 5)	1	329096

MOTOR & CHASSIS PARTS DRAWING AND PARTS LIST



Ref No	Part Description	Qty	Part No
1	10 Lb Weight	2	325767
2	25 Lb Weight	3	325775
3	#10-24 X 3/4" Screw	4	308439
4	Weight Holder	1	325600
5	Rubber Grommet	1	369330
6	Motor Canopy	1	316598
7	Sleeve Connector	1	355844
8	Wire Nut - Grey	2	385425
9	Brush Wear Indicator Light	1	386448
10A	115V, 1 1/2 HP Motor	1	335606
10A	230V, 1 1/2 HP Motor	1	323055
11	115V, Motor w/Gear Box	1	324736
12	3 Idler Gear Box	1	335614
13A	17" Apron	1	353507
13B	20" Apron	1	353523
13C	24" Apron	1	336750
14	Lift Handle	1	305502
15	1/4" Split Lock Washer	8	342858
16	1/2-20 X 3/4" Screw	4	354775
17A	17" Rubber Bumper	1	441678
17B	20" Rubber Bumper	1	441686
17C	24" Rubber Bumper	1	441708
18	3/16" Burr Washer	5	322164
19	3/16" Pop Rivet	9	374733
20	5/16" - 18 Set Screw	2*	352861
21A	Brass Fitting (for 17" & 20")	1	306703
21B	Brass Fitting (for 24")	1	382426
22A	Axle Shaft	2*	353256
22B	Axle Shaft (24" only)	1	386049
23	Steel Spring Washer	5	353248
24	3/8" Flat Steel Washer	6	353221
25A	5" Wheels (for 17" & 20")	2	357766
25B	4" Wheels (for 24")	2	353191
26	Handle Tee Casting	1	370002
27	#10 Lockwasher	4	380725
28	Nylon Spacer	4	365084
29A	Support Strut (for 17" & 20")	1	354570
29B	Support Strut (for 24")	1	312223
N/S	Carbon Brush Set	1	386790

* On 24" floor machine only (1) required