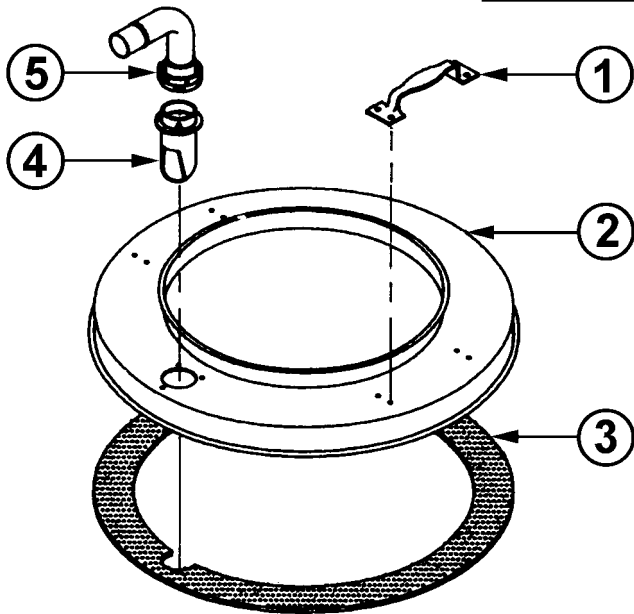


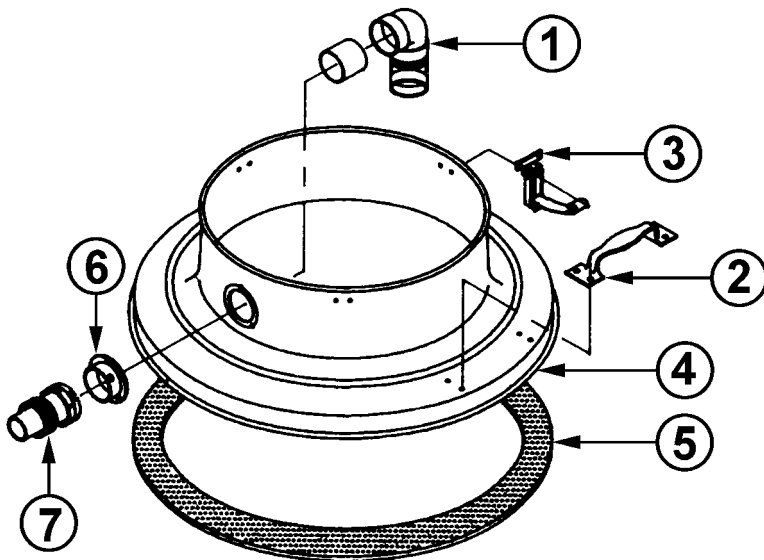
DRUM ADAPTOR, DRY FILTERS & WET ADAPTOR REPLACEMENT PARTS LIST



**3003
ADAPTOR**

(FITS 55 GALLON DRUM)

Ref No	Part Description	Qty	Part No
1	Lift Handles	2	305502
2	Adaptor Ring	1	347353
3	Gasket	1	320560
4	Inlet Fitting	1	356298
5	Elbow Hose Connector	1	341983



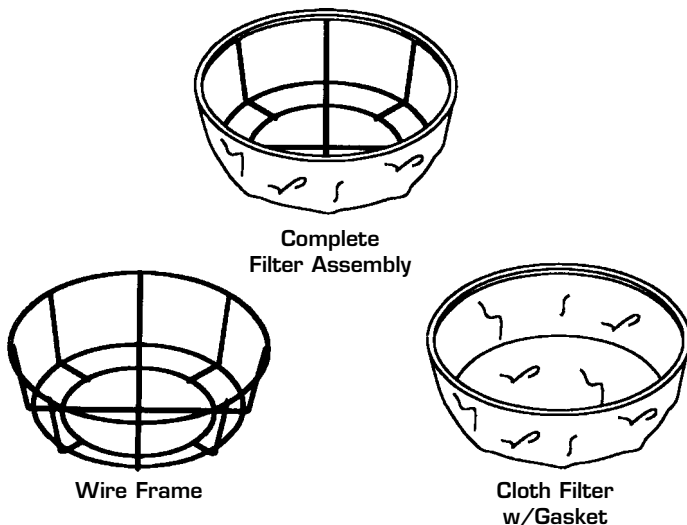
**3005
ADAPTOR**

(FITS 35 - 65 GALLON DRUMS)

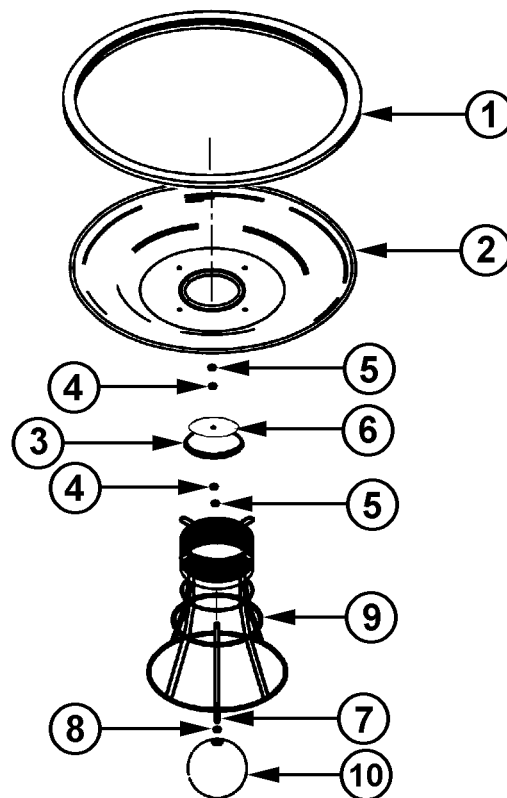
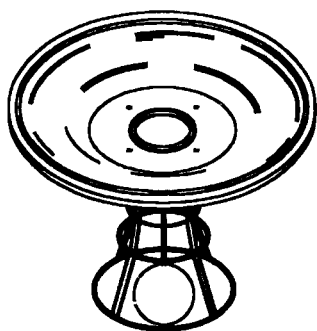
Ref No	Part Description	Qty	Part No
1	Elbow Divertor Assembly	1	350613
2	Lift Handles	2	305502
3	Holdown Clamps	3	358312
4	Drum Adaptor w/o Hardware	1	350524
5	Gasket	1	350559
6	Ext Fitting Assembly	1	350575
7	2" Hose Connector	1	360473

16" DRY FILTER ASSEMBLY

Part Description	Qty	Part No
Complete Dry Filter Assembly	1	306444
Cloth Filter w/Gasket	1	306479
Wire Filter Frame Only	1	304107

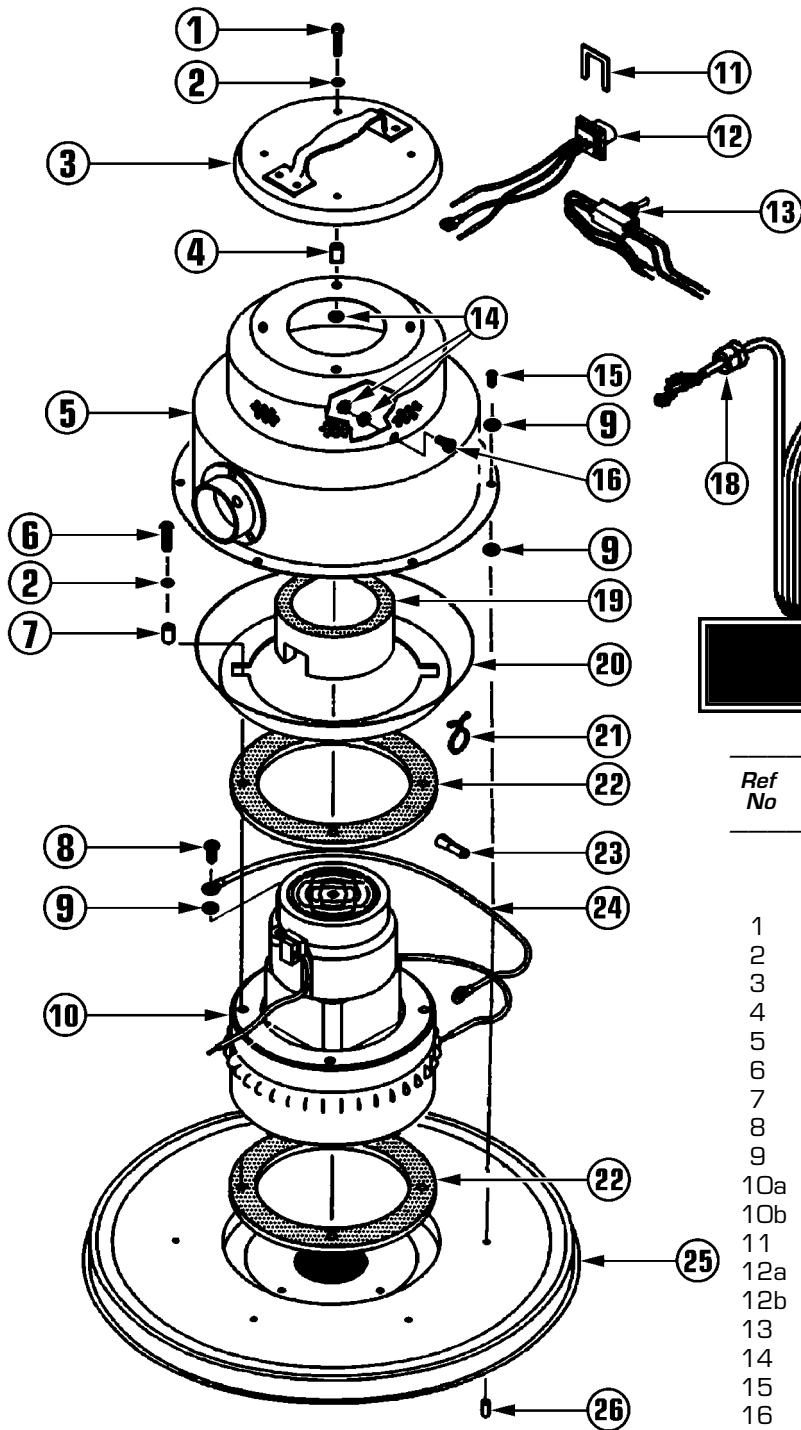


16" WET PICK-UP ADAPTOR



Ret No	Part Description	Qty	Part No
	Complete 16" Wet Pickup Adaptor	1	305987
1	16" Rubber Gasket	1	376027
2	16" Float Pan Adaptor	1	386081
3	Plate Gasket	1	374644
4	Spring Washer	2	372994
5	Ring Retainer	2	372986
6	Aluminum Valve Plate	1	375322
7	Float Spacer Rod	1	372943
8	1/4-20 Hex Nut w/Lock Washer	1	338966
9	Float Cage Assy (4 thur 10)	1	372900
10	Float Ball w/Hex Nut	1	346756

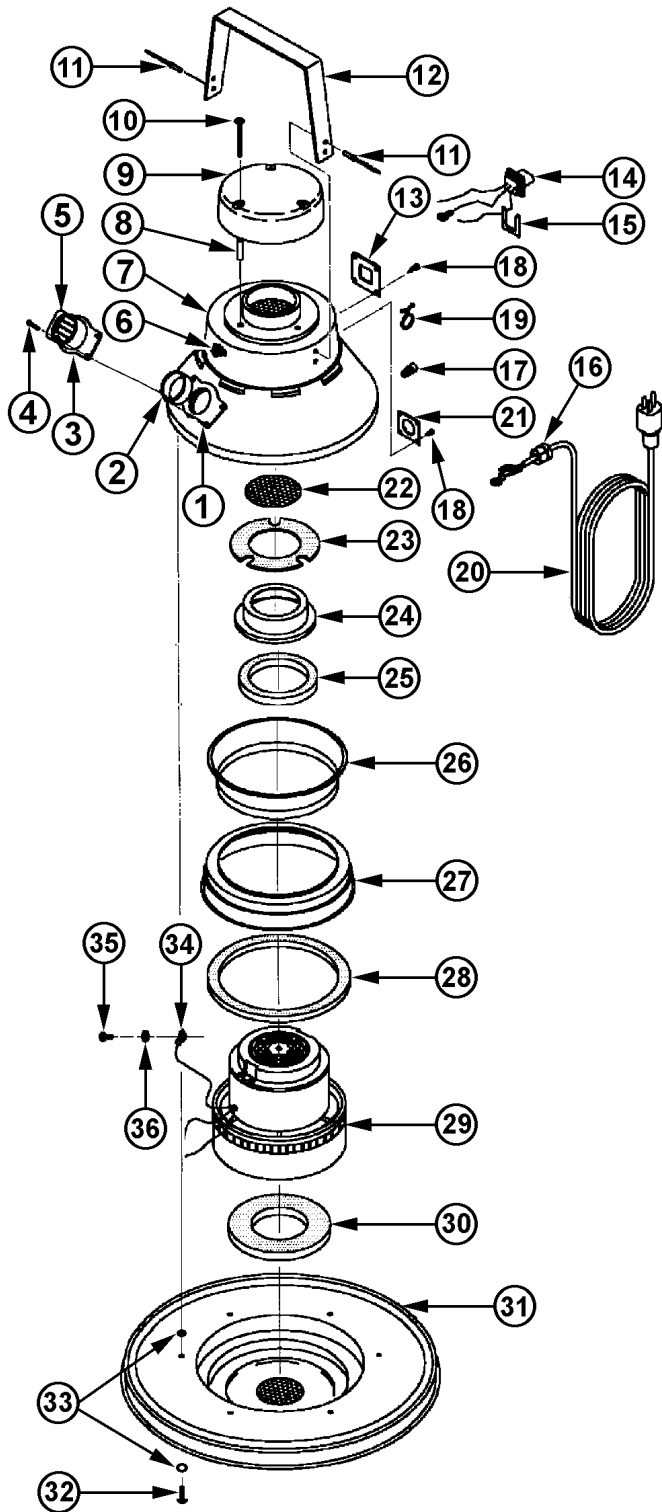
#12 MOTOR HEAD REPLACEMENT PARTS LIST (14" & 16" DIA)



2 HP BY-PASS MOTOR HEAD

Ref No	Part Description	Qty	Part No
	14" Motor Head Assembly	1	318973
	16" Motor Head Assembly	1	318930
1	#10-24 X 1" Screw	4	335169
2	Flat Washer	6	322164
3	Dome Cover w/Handle	1	363057
4	Nylon Spacer	4	332186
5	Dome Assembly	1	320137
6	#10 X .62 Screw	2	306606
7	Nylon Spacer	2	365084
8	#10-32 X .31 Screw	1	393258
9	#12 Int. Tooth Lockwasher	3	364037
10a	115 Volt, 2 HP Motor	1	389684
10b	230 Volt, 2 HP Motor	1	389692
11	Retainer Cup	1	341932
12a	115 Volt Convenience Outlet	1	341746
12b	230 Volt Convenience Outlet	1	312495
13	Switch Assembly	1	324140
14	#10-24 Hex Nut w/Lockwasher	4	313815
15	#12-14 X 1/2" Screw	6	314595
16	#10-24 X 3/4" Screw	1	337315
17	30 Ft - 16/3 Power Cord	1	306819
18	Strain Relief	1	434299
19	Motor Holddown	1	396559
20	Chimney Gasket	2	387673
21	Purse Lock	1	365483
22	Circle Gasket	1	378607
23	Yellow Wire Connector	4	350648
24	Grounding Wire	1	307440
25a	14" Cover Assembly	1	320110
25b	16" Cover Assembly	1	317888
26	Screw Protector	6	341649

#15 MOTOR HEAD REPLACEMENT PARTS LIST

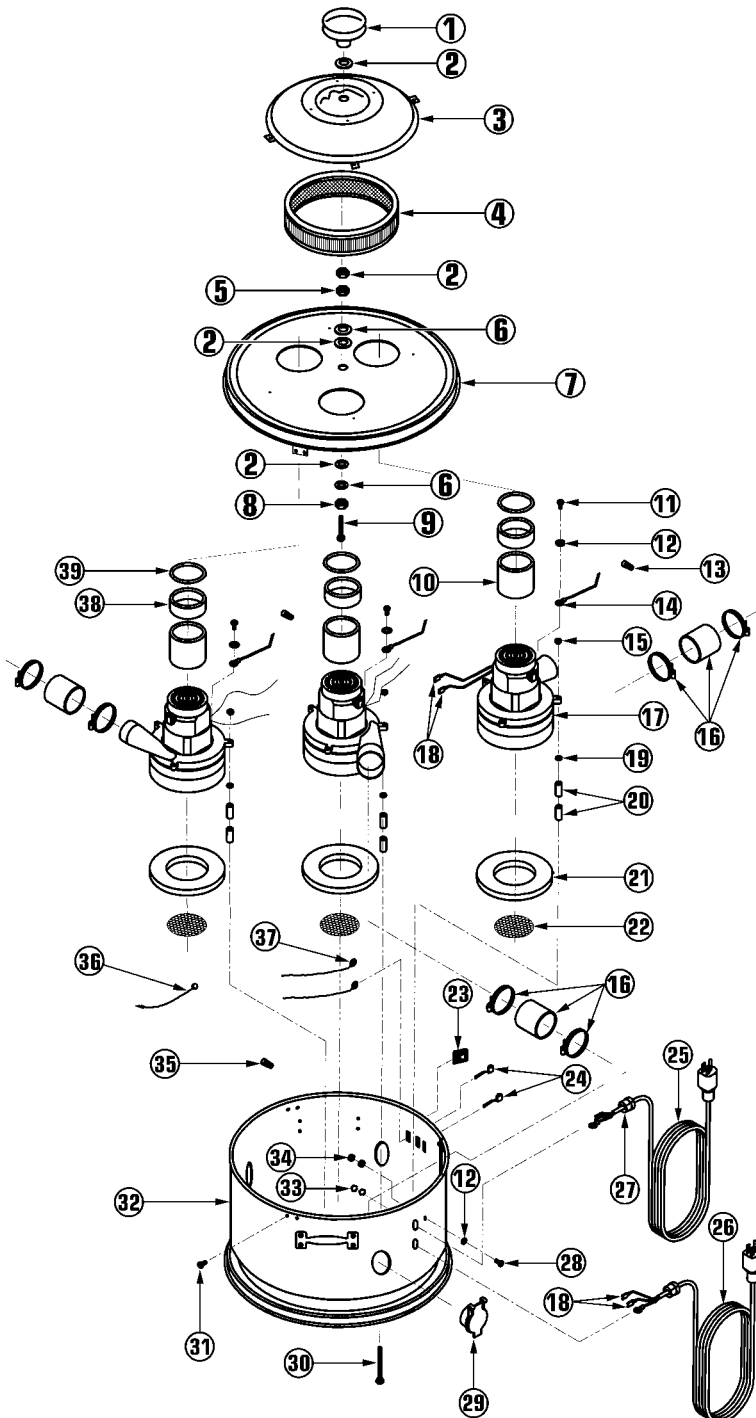


2¹/₄ HP BY-PASS MOTOR HEAD

Ref No	Part Description	Qty	Part No
	14" Motor Head Assembly	1	369942C
	16" Motor Head Assembly	1	369543C
1	Exhaust Connector Gasket	1	364606
2	Flat Gasket	1	368008
3	Air Deflector Exhaust	1	367958
4	Tubular Rivets	4	348538
5	Exhaust Connector w/Pins	1	364665
6	Switch	1	324140
7	Dome Assembly	1	367818
8	Steel Spacer	3	367842
9	Dome Cover	1	367850
10	#10-24 X 1 ³ / ₄ " Screw	3	366676
11	Handle Pop Rivets	4	318906
12	Carrying Handle	1	367834
13	Receptacle Mounting Plate	1	367990
14A	115 Volt Convenience Outlet	1	341746
14B	230 Volt Convenience Outlet	1	312495
15	Retainer Clip	1	341932
16	Strain Relief	1	434299
17	Yellow Wire Connector	4	350648
18	#6-32 X 1 ¹ / ₄ " Screw	8	349402
19	Large Purse Lock	2	365483
20	30 Ft, 14/3 Line Cord	1	312789
21	Strain Relief Mounting Plate	1	367982
22	Disc Screen	1	367893
23	Pyrell Gasket	1	367885
24	Air Conductor Spinning	1	367974
25	Top Motor Gasket	1	317446
26	Motor Holddown Spinning	1	367915
27	Air Collector Assembly	1	367931
28	Flat Gasket	1	379158
29A	115 Volt, 2 ¹ / ₄ HP Motor	1	304301
29B	230 Volt, 2 ¹ / ₄ HP Motor	1	311987
30	Motor Gasket	1	378607
31A	16" Cover Assembly	1	373184
31B	14" Cover Assembly	1	373192
32	#10-24 X 1 ¹ / ₂ " Screw	6	372633
33	#12 Internal Tooth Lockwasher	2	364037
34	Electrical Terminal	1	319724
35	#10-24 X 3 ³ / ₄ " Screw	1	337315
36	#10-24 Hex Nut w/Lockwasher	3	331201

#40 MOTOR HEAD REPLACEMENT PARTS LIST

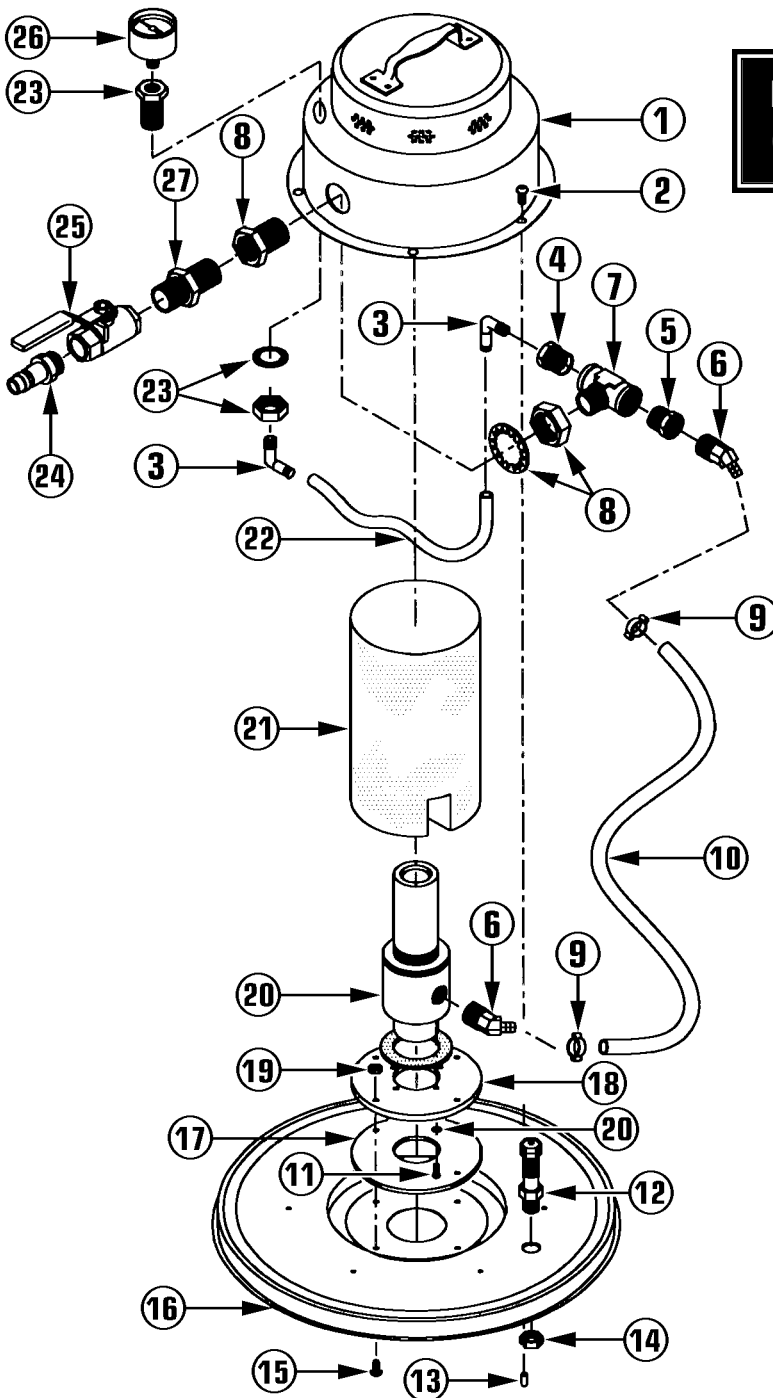
3-1 TANG MOTOR HEAD (16" DIA)



Ref No	Part Description	Qty	Part No
	Motor Head Assembly	1	358509
1	Plastic Knob w/Insert	1	381861
2	Flat Washer	3	380962
3	Top Cover	1	358738
4	Air Filter	1	214868
5	5/16-18 Lock Nut	1	380792
6	5/16" Lock Washer	2	392359
7	16" Flat Cover	1	358681A
8	5/16-18 Hex Nut	2	305480
9	5/16-18 x 4 1/2" Bolt	1	381721
10	Chimney Gasket	3	387673
11	#10 - 32 X .31" Ground Screw	3	393258
12	#12 Int Tooth Lockwasher	4	364037
13	Orange Wire Nut	2	398985
14	#16-1 X 10" Ground Lead w/Term	4	307440
15	1/4- 20 Locknut	9	380784
16	Adaptor Assembly	3	359769
17	1 HP, 115 Volt By Pass Motor	3	392537
18	Slip-On Insulated Terminal	4	394041
19	Steel Washer	9	380970
20	Steel Spacer	18	364983
21	Circle Gasket	3	394300
22	Motor Screen	3	311073
23	20 AMP ON/OFF Rocker Switch	1	360694
24	16 AMP Rocker Switch	2	393754
25	30 Ft, 12/3 Yellow Line Cord	1	358630
26	30 Ft, 18/3 Yellow Line Cord	1	318647
27	Strain Relief	2	434299
28	#10-24 X 3/4" Screw	1	337315
29	Metal Valve	3	358606A
30	.25 - 20 X 3 1/2" Carriage Bolt	9	438073
31	#10 X .62 Screw	6	307483
32	Adaptor Assembly w/Handles	1	366161A
33	1/2" Lock Nut	2	433683
34	#10 - 24 Hex Nut	3	331201
35	Large Tan Wire Nut	2	358827
36	#16-1 X 10" Electrical Wire	4	307440
37	#16 X 6" Switch Lead w/Terminal	2	351202
38	Circle Gasket	3	364940
39	Circle Gasket	3	317926

AIR-OPERATED HEAD REPLACEMENT PARTS LIST

NON-ELECTRIC COMPRESSED AIR (12" & 16" DIA)



Ref No	Part Description	Qty	Part No
	16" Air-Operated Head Assy	1	304913
	12" Air-Operated Head Assy	1	368563
1	Dome Assembly	1	304077
2	#12-14 X 1/2" Screw	6	314595
3	1/8" NPT Elbow Fitting	2	304395
4	1/2" to 1/8" Reducer	1	304298
5	1/2" to 3/8" Reducer	1	359947
6	45 Deg Barber Connector	2	304679
7	1/2" Tee Fitting	1	304379
8	1/2" NPT Bulk Head	1	304115
9	5/8" Hose Clamp	2	304948
10	3/8" High Pressure Hose	1	304964
11	#10-24 X 1/2" Screw	4	341622
12	Air Relief Valve	1	304883
13	Screw Protector	6	341649
14	Pal Nut	1	307971
15	#10-24 X 5/8" Screw	4	351210
16	16" Cover Assembly	1	362778
16B	12" Cover Assembly	1	302929
17	Circle Gasket	1	394319
18	Mounting Plate	1	304700
19	#10-24 Hex Nut w/lockwasher	4	331201
20	Venturi	2	304506
21	Muffler	1	306096
22	1/4" OD Tubing	1	304492
23	1/8" NPT Bulk Head	1	304093
24	Quick Coupler	1	304484
25	Ball Valve	1	304468
26	0-200 Pressure Gauge	1	304131
27	1/2" Brass Close Nipple Fitting	1	350478
28	Gasket	1	416460
29	#10 Lockwasher	4	380725